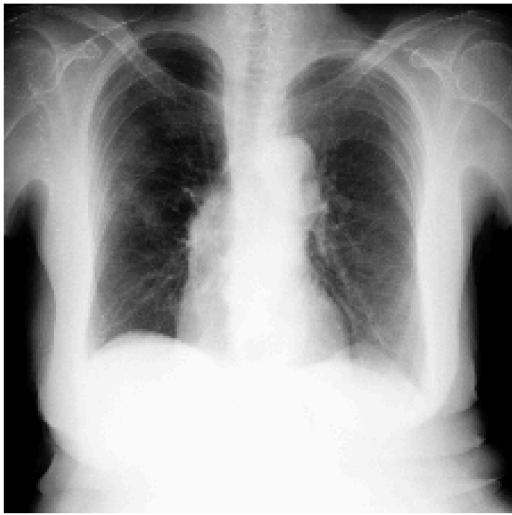
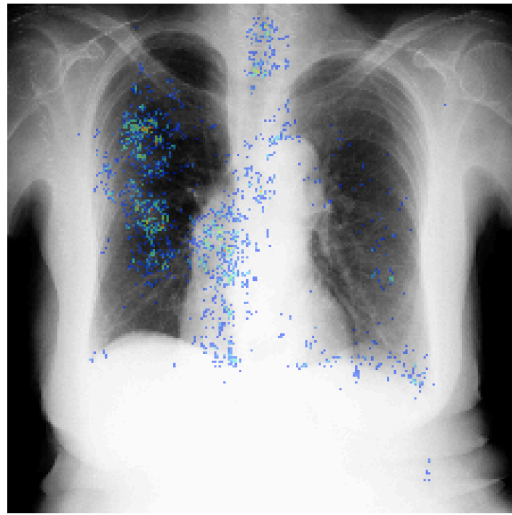


Input Image

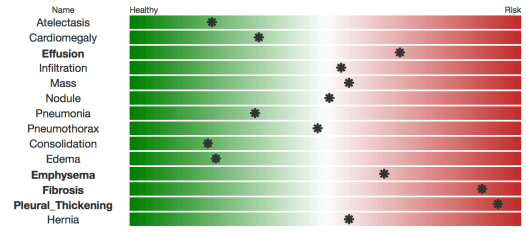


recScore:0.46, ssim:0.50

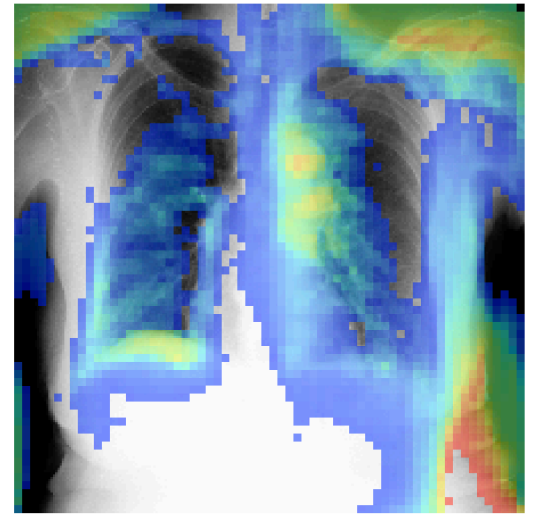
Predictive image regions
Heatmap of image regions which influence the prediction.



Disease Predictions
Risk of a disease.

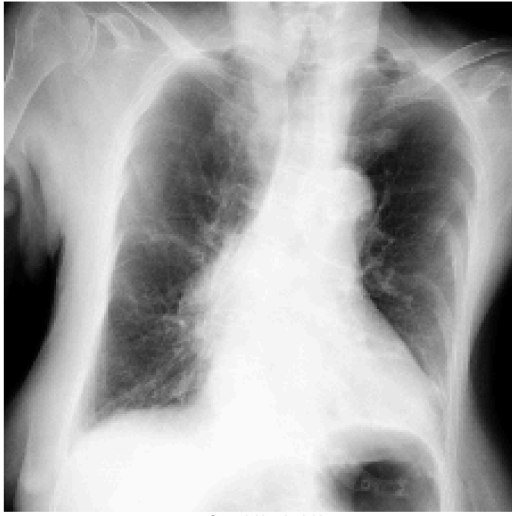


Input Image



recScore:0.46, ssim:0.50

Input Image



recScore:0.66, ssim:0.26

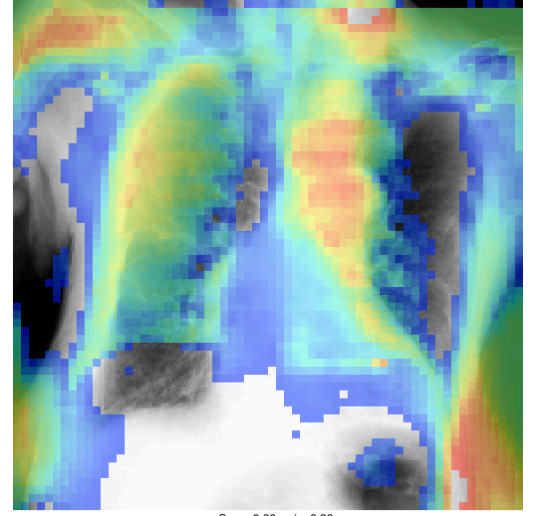
Predictive image regions
Heatmap of image regions which influence the prediction.



Disease Predictions
Risk of a disease.

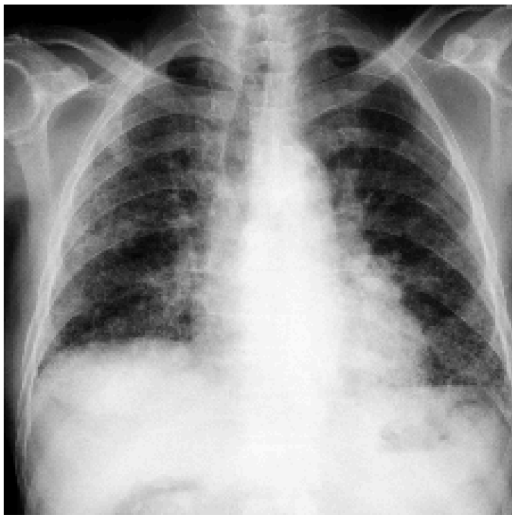
This image is too far out of our training distribution so we will not process it. (recScore:0.66, ssim:0.26). It could be that your image is not cropped correctly or it was acquired using a protocol that is not in our training data.

Input Image



recScore:0.66, ssim:0.26

Input Image

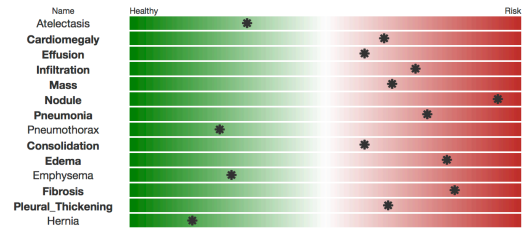


recScore:0.50, ssim:0.40

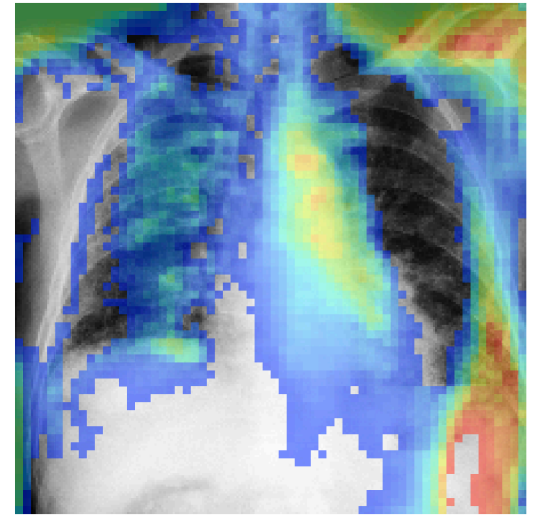
Predictive image regions
Heatmap of image regions which influence the prediction.



Disease Predictions
Risk of a disease.



Input Image



recScore:0.50, ssim:0.40

Input Image



recScore:0.49, ssim:0.30

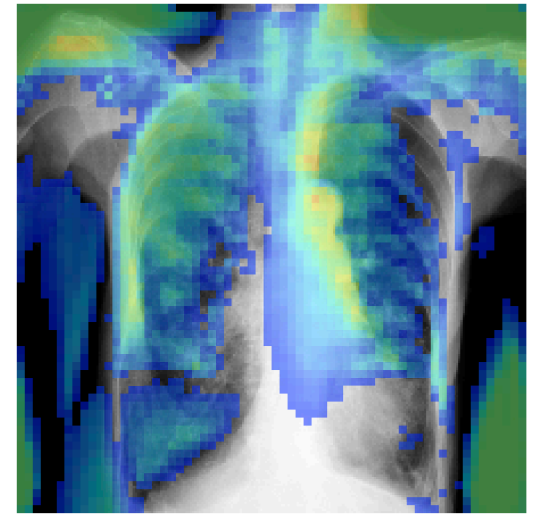
Predictive image regions
Heatmap of image regions which influence the prediction.



Disease Predictions
Risk of a disease.

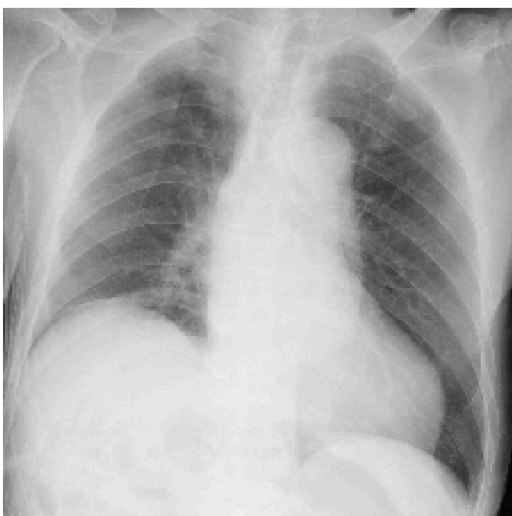
This image is too far out of our training distribution so we will not process it. (recScore:0.49, ssim:0.30). It could be that your image is not cropped correctly or it was acquired using a protocol that is not in our training data.

Input Image



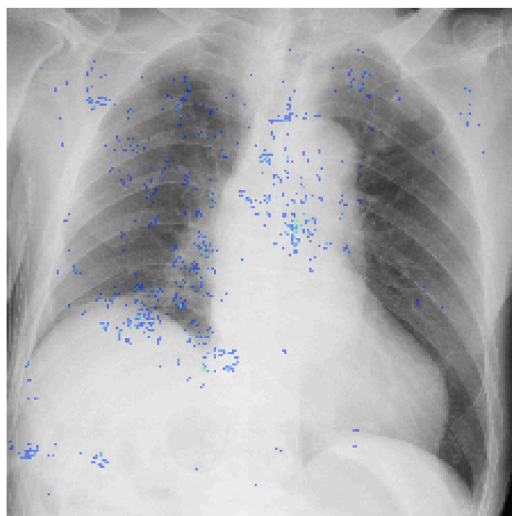
recScore:0.49, ssim:0.30

Input Image

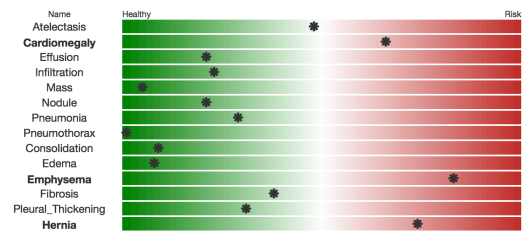


recScore:0.68, ssim:0.36

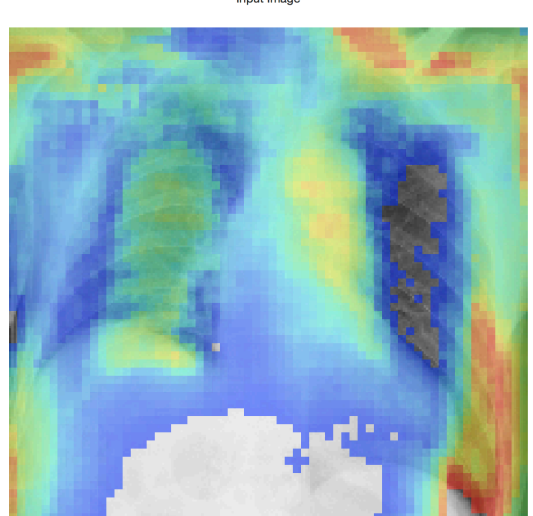
Predictive image regions
Heatmap of image regions which influence the prediction.



Disease Predictions
Risk of a disease.

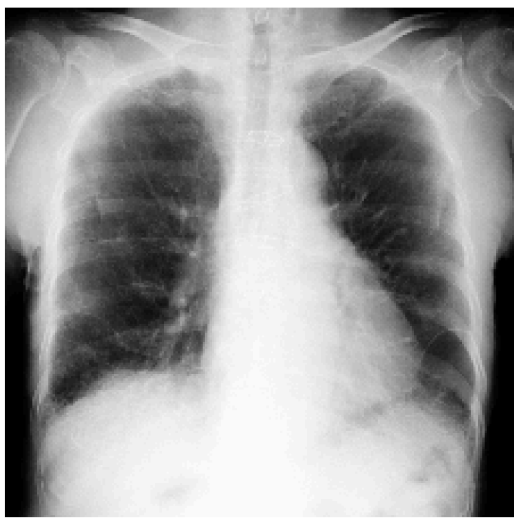


Input Image



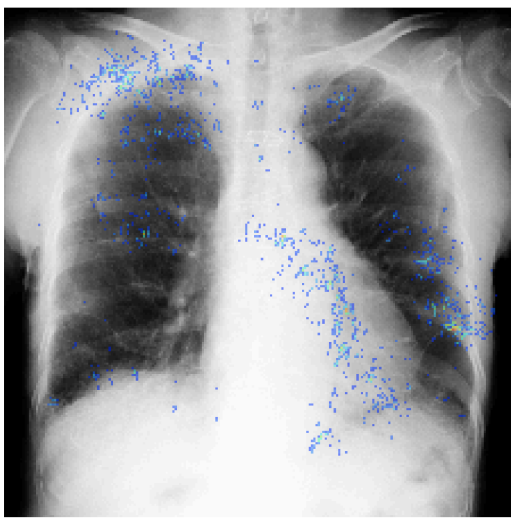
recScore:0.68, ssim:0.36

Input Image

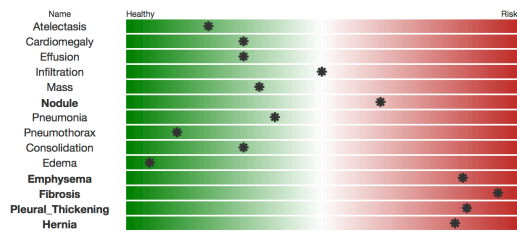


recScore:0.51, ssim:0.47

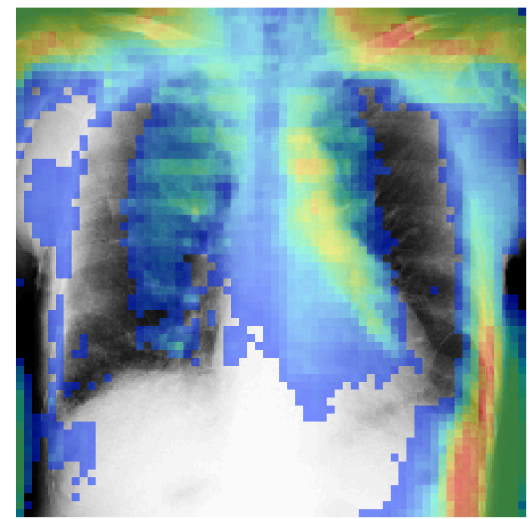
Predictive image regions
Heatmap of image regions which influence the prediction.



Disease Predictions
Risk of a disease.

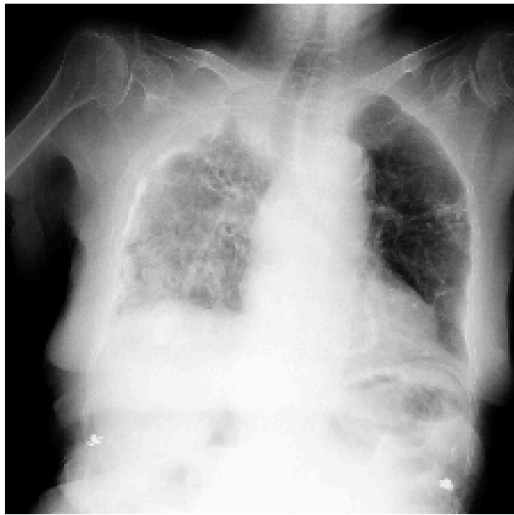


Input Image



recScore:0.51, ssim:0.47

Input Image



recScore:0.57, ssim:0.13

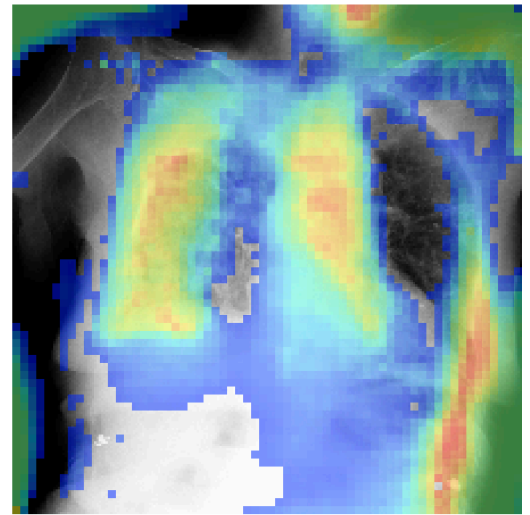
Predictive image regions
Heatmap of image regions which influence the prediction.



Disease Predictions
Risk of a disease.

This image is too far out of our training distribution so we will not process it. (recScore:0.57, ssim:0.13). It could be that your image is not cropped correctly or it was acquired using a protocol that is not in our training data.

Input Image



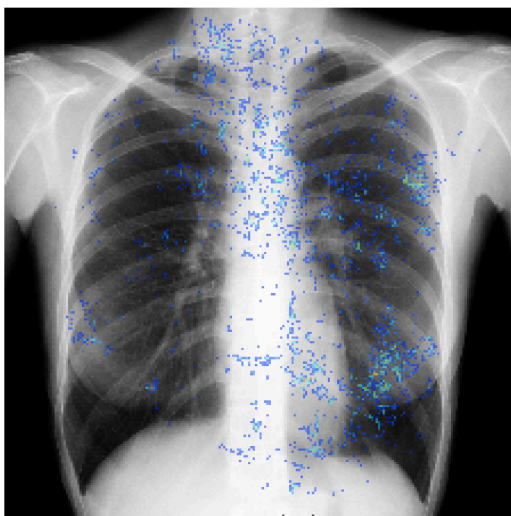
recScore:0.57, ssim:0.13

Input Image

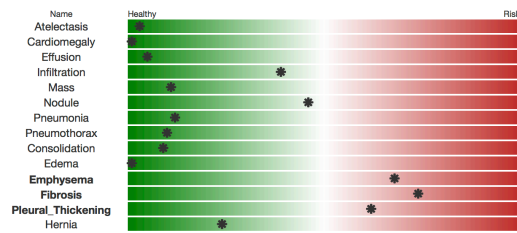


recScore:0.49, ssim:0.41

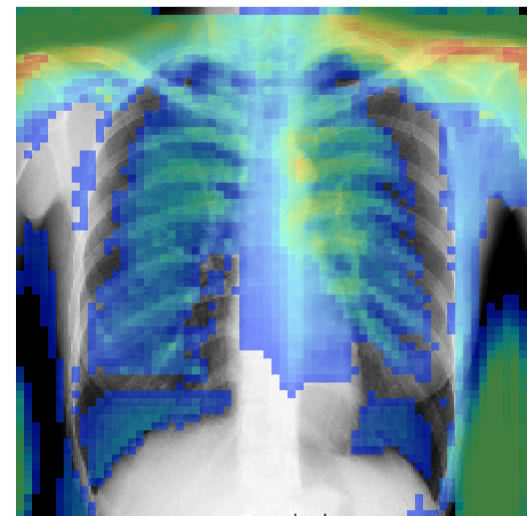
Predictive image regions
Heatmap of image regions which influence the prediction.



Disease Predictions
Risk of a disease.



Input Image



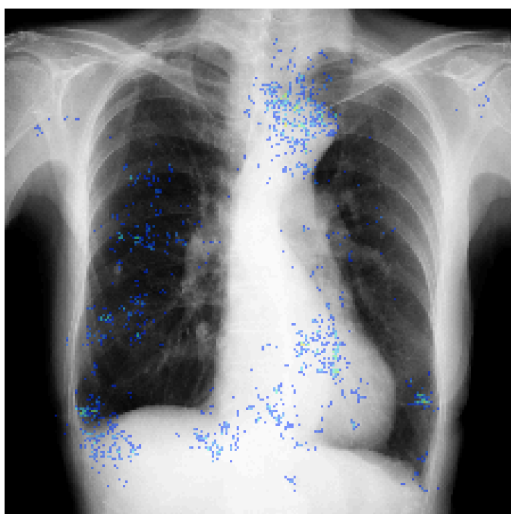
recScore:0.49, ssim:0.41

Input Image

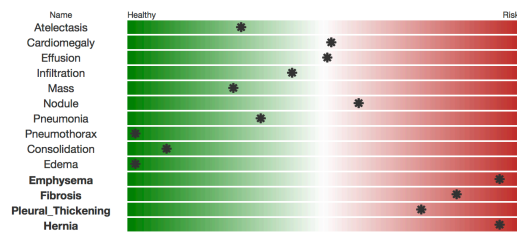


recScore:0.49, ssim:0.41

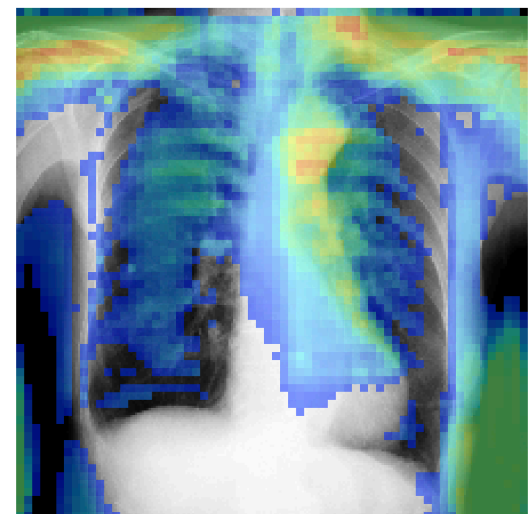
Predictive image regions
Heatmap of image regions which influence the prediction.



Disease Predictions
Risk of a disease.



Input Image



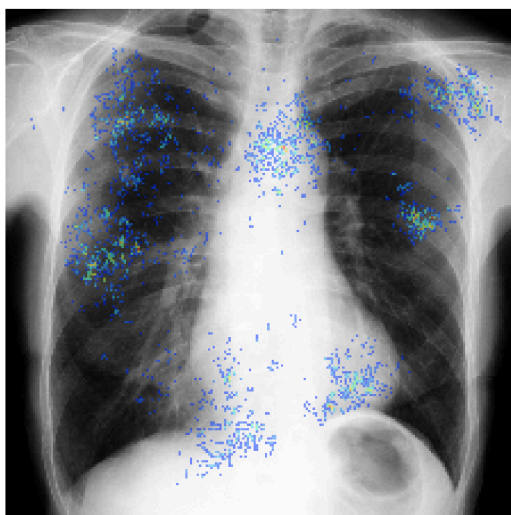
recScore:0.49, ssim:0.41

Input Image

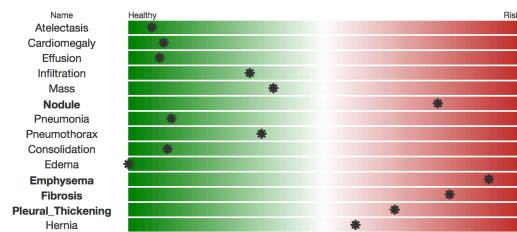


recScore:0.48, ssim:0.36

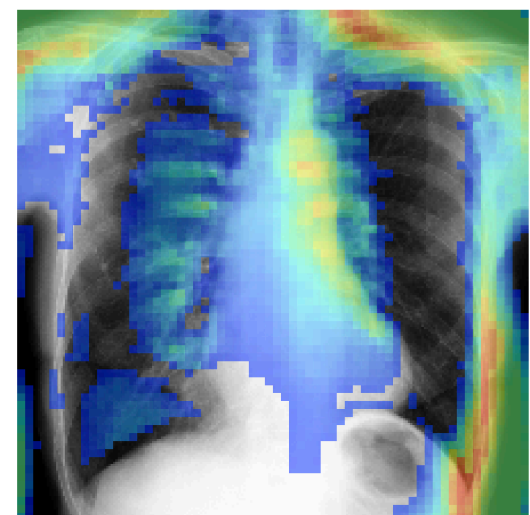
Predictive image regions
Heatmap of image regions which influence the prediction.



Disease Predictions
Risk of a disease.

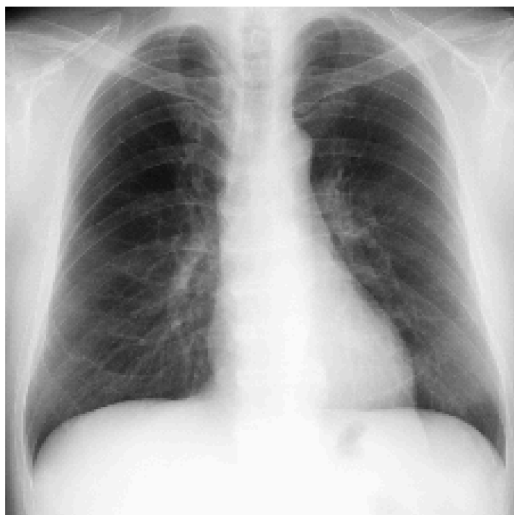


Input Image



recScore:0.48, ssim:0.36

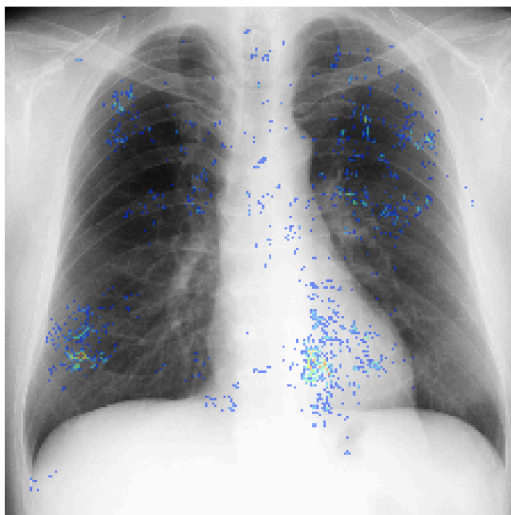
Input Image



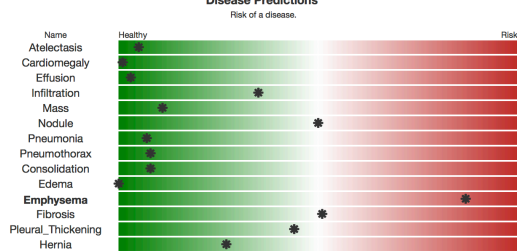
recScore:0.54, ssim:0.34

Predictive image regions

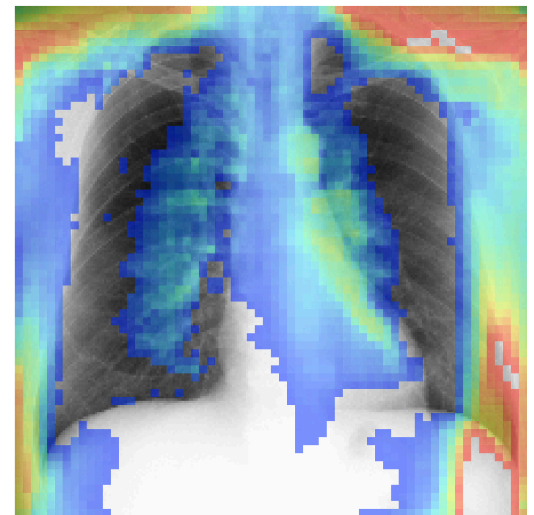
Heatmap of image regions which influence the prediction.



Disease Predictions

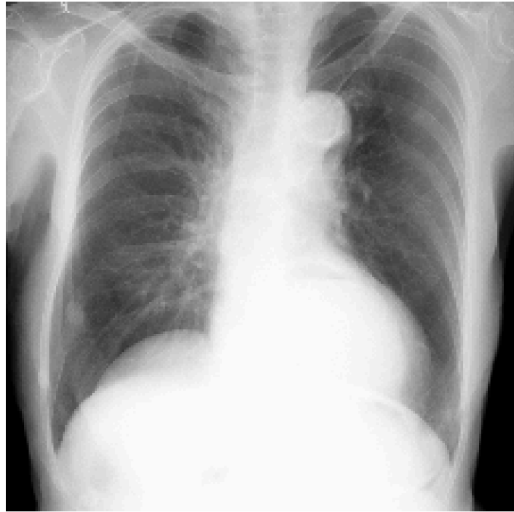


Input Image



recScore:0.54, ssim:0.34

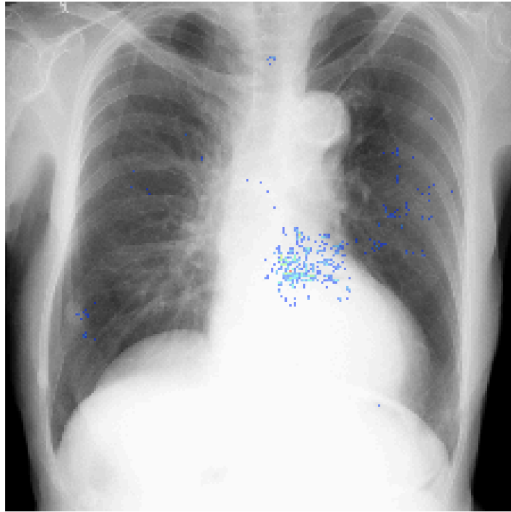
Input Image



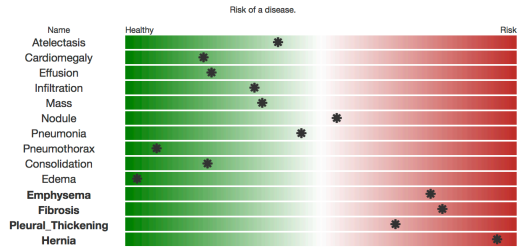
recScore:0.61, ssim:0.34

Predictive image regions

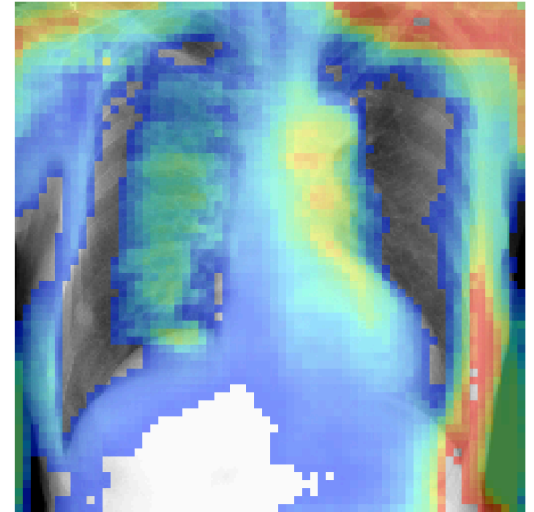
Heatmap of image regions which influence the prediction.



Disease Predictions

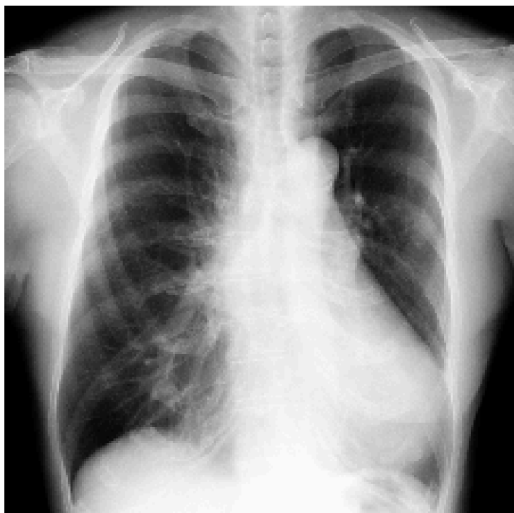


Input Image



recScore:0.61, ssim:0.34

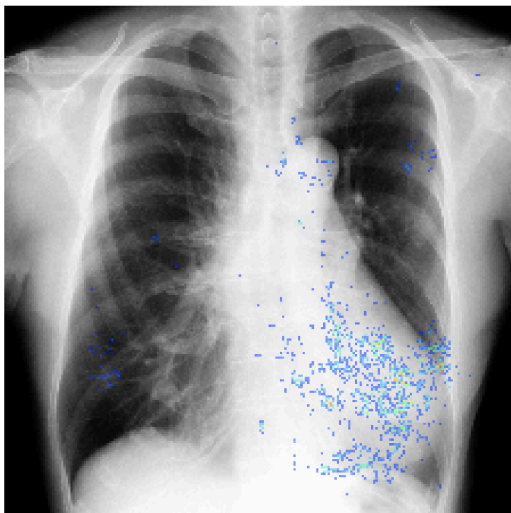
Input Image



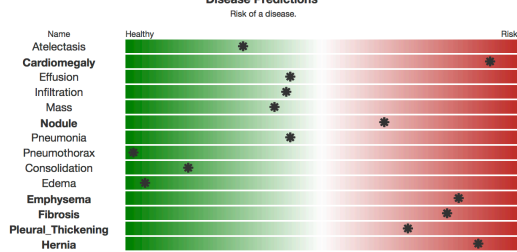
recScore:0.57, ssim:0.39

Predictive image regions

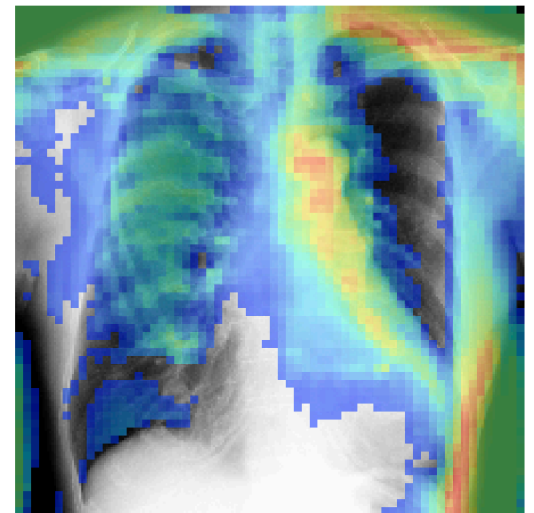
Heatmap of image regions which influence the prediction.



Disease Predictions



Input Image



recScore:0.57, ssim:0.39

Input Image



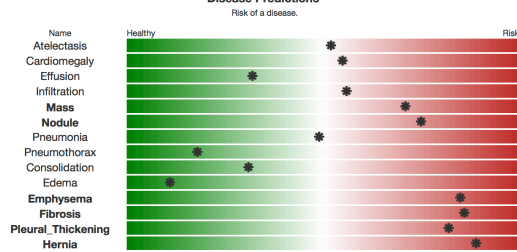
recScore:0.38, ssim:0.46

Predictive image regions

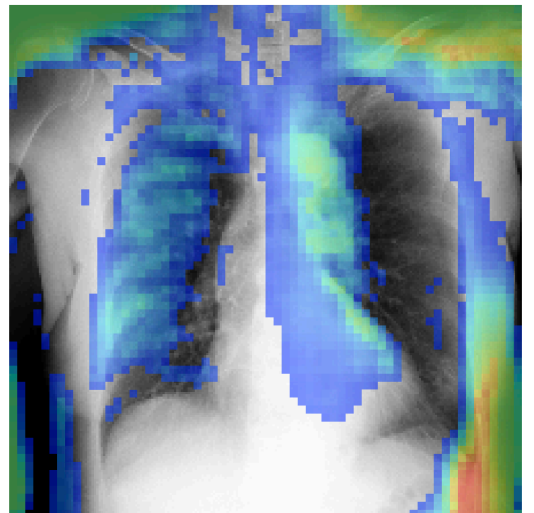
Heatmap of image regions which influence the prediction.



Disease Predictions



Input Image



recScore:0.38, ssim:0.46

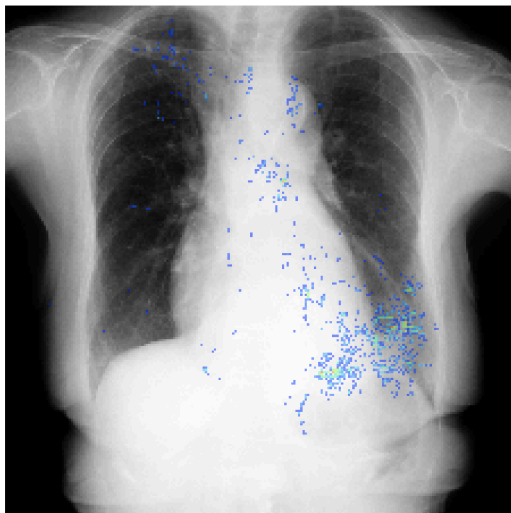
Input Image



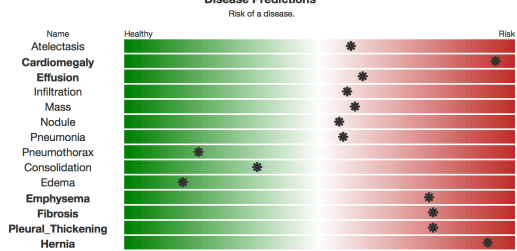
recScore:0.44, ssim:0.41

Predictive image regions

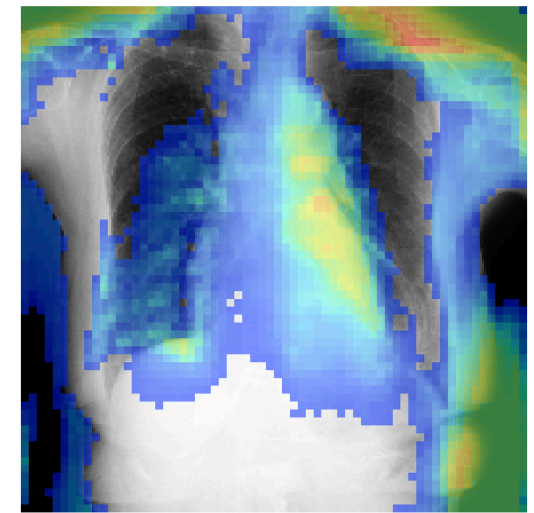
Heatmap of image regions which influence the prediction.



Disease Predictions



Input Image



recScore:0.44, ssim:0.41

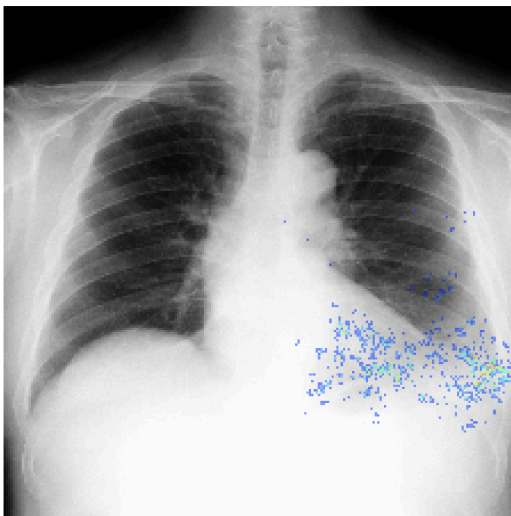
Input Image



recScore:0.47, ssim:0.37

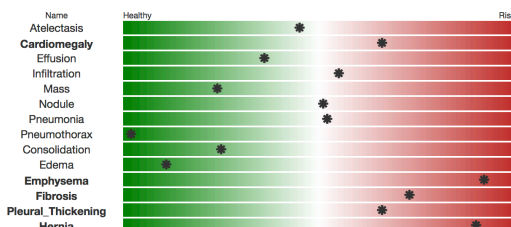
Predictive image regions

Heatmap of image regions which influence the prediction.

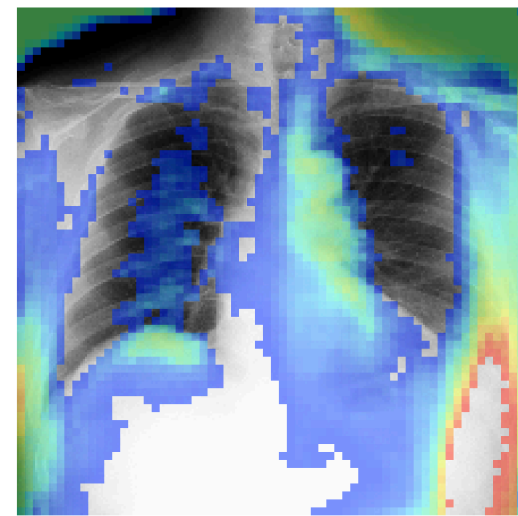


Disease Predictions

Risk of a disease.

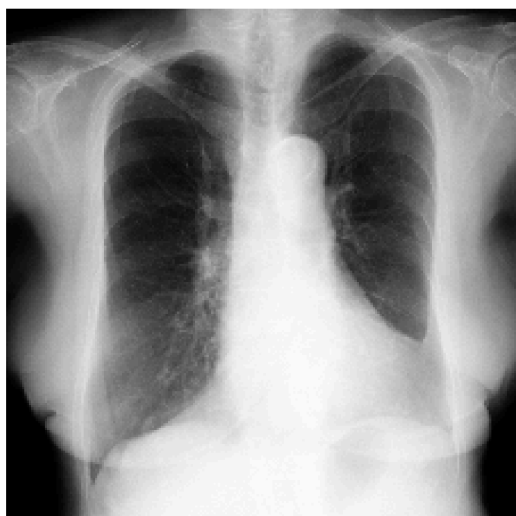


Input Image



recScore:0.47, ssim:0.37

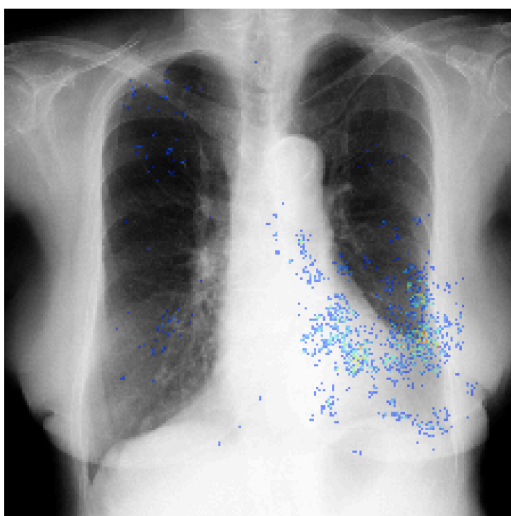
Input Image



recScore:0.39, ssim:0.42

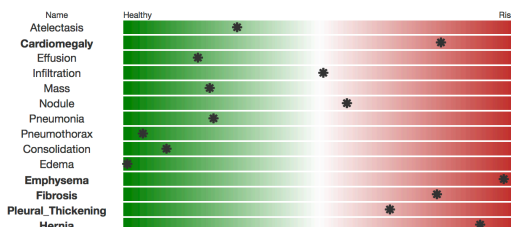
Predictive image regions

Heatmap of image regions which influence the prediction.

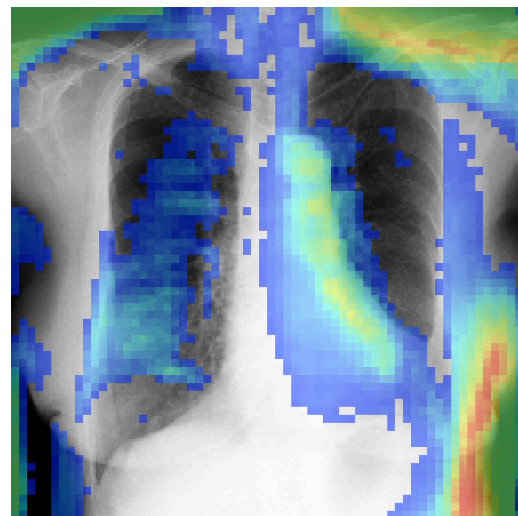


Disease Predictions

Risk of a disease.

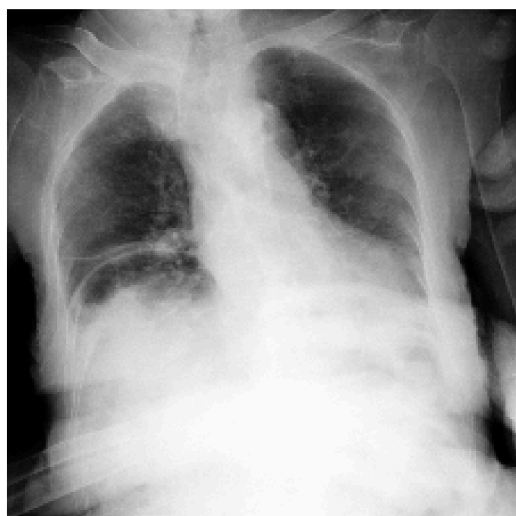


Input Image



recScore:0.39, ssim:0.42

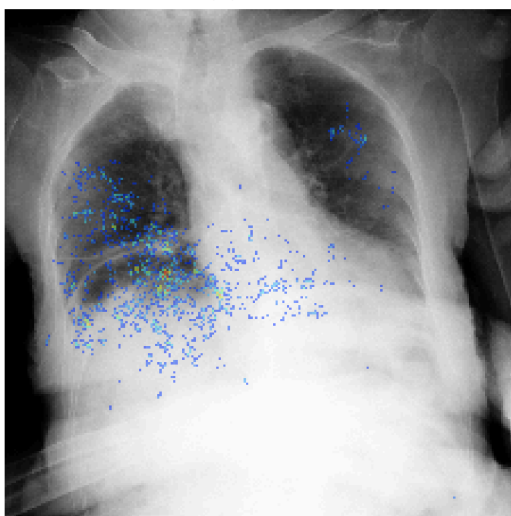
Input Image



recScore:0.49, ssim:0.39

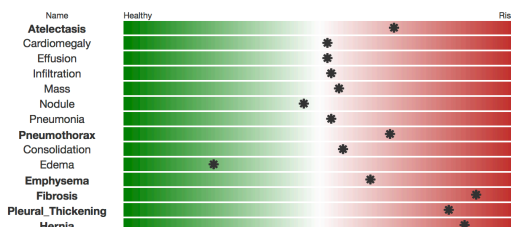
Predictive image regions

Heatmap of image regions which influence the prediction.

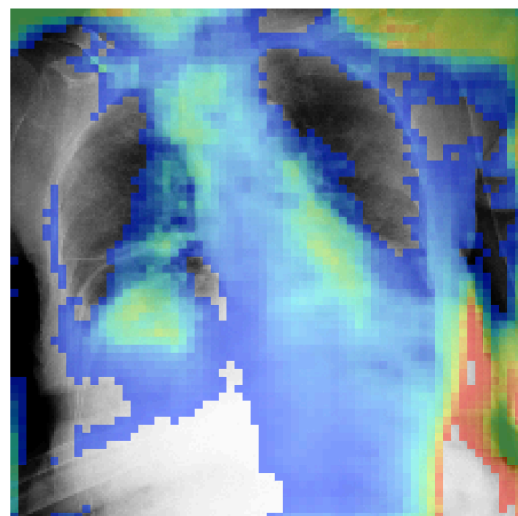


Disease Predictions

Risk of a disease.

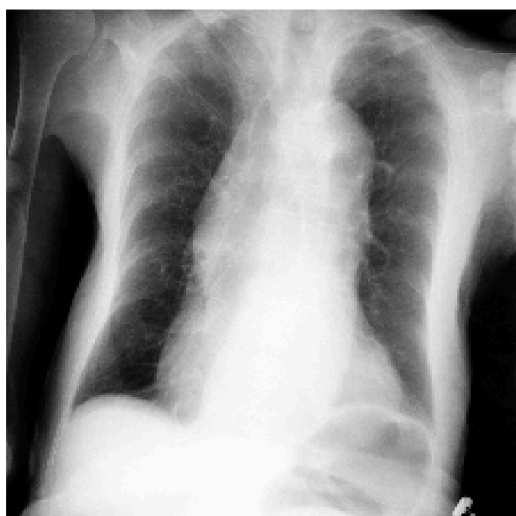


Input Image



recScore:0.49, ssim:0.39

Input Image



recScore:0.66, ssim:0.23

Predictive image regions

Heatmap of image regions which influence the prediction.

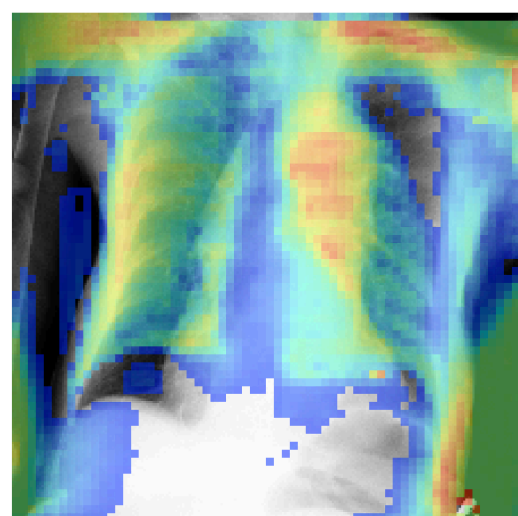


Disease Predictions

Risk of a disease.

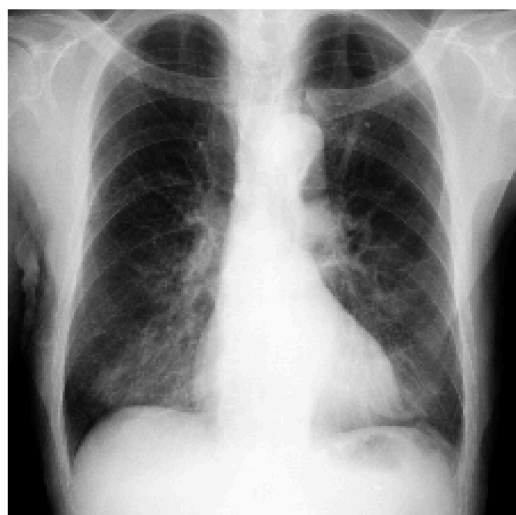
This image is too far out of our training distribution so we will not process it. (recScore:0.66, ssim:0.23). It could be that your image is not cropped correctly or it was acquired using a protocol that is not in our training data.

Input Image



recScore:0.66, ssim:0.23

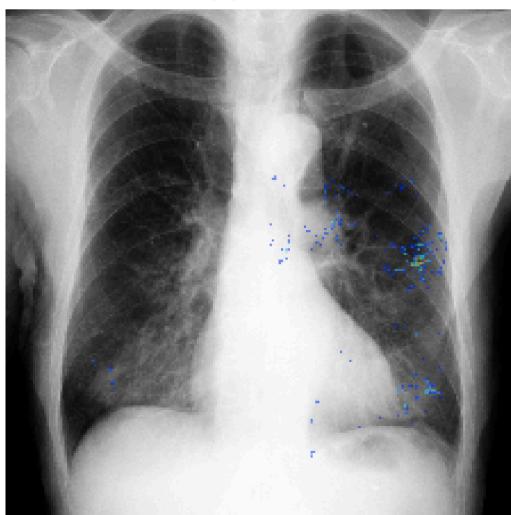
Input Image



recScore:0.51, ssim:0.41

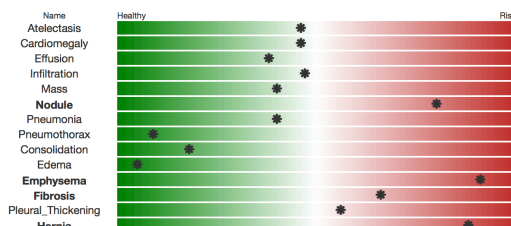
Predictive image regions

Heatmap of image regions which influence the prediction.

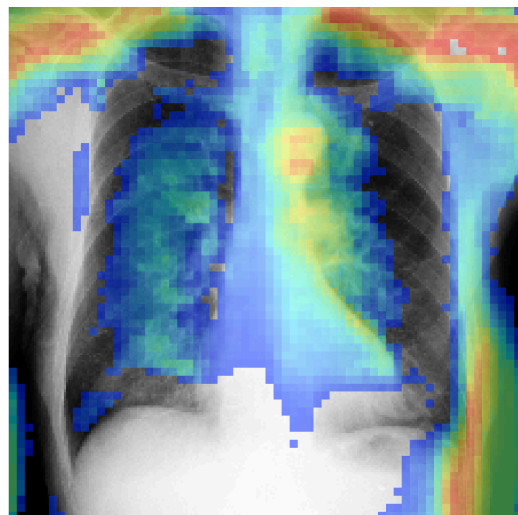


Disease Predictions

Risk of a disease.



Input Image



recScore:0.51, ssim:0.41